

# ELECTRIC WHEEL LOADER



## NE50-EL

**NEW ENERGY ASIA CO., LTD.**

**“ We’re Changing the Way  
the World Thinks About  
Machinery “**

***New Energy Asia Pacific Co., Ltd***

as part of the effort to make construction more sustainable, we are rolling out all-electric versions of traditional construction vehicles. Electric construction equipment isn't a new concept. Hybrid electric machines have been available for years, and all-electric models of excavators, loaders, dump truck and other heavy machinery are currently available over the world. In coming years, electric heavy machinery will join the ranks of electric cars and public transportation as an eco-friendly alternative, it will be the push for sustainable construction practices intensifie.

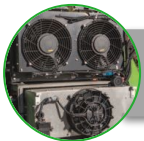
# NE50-EL ELECTRIC WHEEL LOADER

## KEY FEATURES

eTECH NE50-EL electric wheel loaders feature the perfect combination of productivity and great cost of ownership. Industry leading maneuverability and a range of popular capacities enable the product to meet even more of your material handling needs.



Convenient access ports for easy vehicle maintenance



Powerful battery system grants the strength for heavy tasks



All-Lithium system provides 9 hours operation time from a single 2 hour charge



Air conditioning provides operator comfort even in the harshest heat



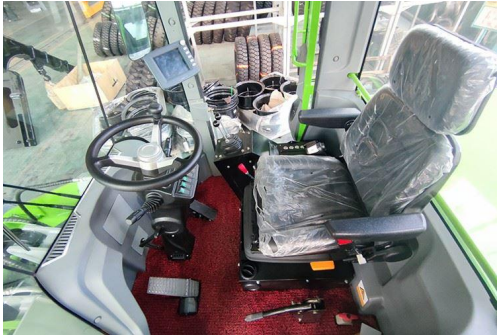
Quick hitch provides a secure changing of front attachments



Monitor controller gives real time display of vehicle status

# NE50-EL ELECTRIC WHEEL LOADER

## LOW ENERGY CONSUMPTION & LOW NOISE



- Independently developed special load positive flow control system with variable speed, good controllability, good low speed performance, supply on demand, can reduce overflow loss during unloading, energy saving and high efficiency, 1 hour comprehensive energy consumption 30-35kwh.
- After Testing the noise in the cab is as low as 60-75dB, which greatly reduces the harm of noise pollution to the driver.

## LONG BATTERY LIFE

- adopts AC/DC dual-mode charging, which can directly supply power to the mains, realize diversification of the work site, improve endurance and save operating costs
- The walking system can recover energy from braking, and the hydraulic system can realize electrical energy recovery, which further improves the battery life of the vehicle.
- One charge only takes 1-2 hours  
(calculated by 120kW charging pile: 5T model supports dual-gun charging, and 240kW charging pile only takes 1 hour)



## LESS MAINTENANCE COST



- Automatic lift hood, special chassis and frame development for parts, reasonable layout of vehicle parts, easy maintenance; hydraulic braking is safe and reliable to reduce energy consumption and low maintenance cost

# NE50-EL ELECTRIC WHEEL LOADER

The hydraulic system and the traveling system are independently driven, which is simple, reliable, energy-saving and efficient; the traveling motor is driven by the torque / speed / power mode compound, with strong power, and the driving force is superior to the traditional loader of the same tonnage.

Through reasonable calculation and selection, reasonable arrangement of cooling pipes and intelligent control of heat dissipation system, the temperature of each high-voltage electrical component of the vehicle and the temperature of hydraulic oil/gear box gear oil can always be kept within the normal working temperature range during long-term work.



The gears are all used in the front two and the rear, and the planetary gearbox has a more reasonable transmission ratio, which can meet the requirements of traction and speed at the same time, and is more suitable for complex and changeable working conditions.

V-shaped working conditions, transition distance of 20 meters, no need to stop  
Low-speed switching, using electro-hydraulic proportional shift control system, smooth control without impact

# NE50-EL ELECTRIC WHEEL LOADER

## Performance

	Model	NE50-EL	
Basic	Bucket Capacity Range	m <sup>3</sup>	3
	Rated Load	kg	5000
	Operating Weight	kg	≈18500
	Max.Tractive Force	KN	≥150
	Breakout Force	KN	≥160
	Overall Dimensions(L×W×H)	mm	8700X3016X3380
	Dumping Height	mm	3100 / 3400
	Dumping Distance	mm	1100 / 1300
	Wheel base	mm	3260
	Wheel Tread	mm	2290
	Max.Turning Angle	°	35
	Max Gradeability	%	53%
	Forward I	Km/h	12
	Forward II	Km/h	32
Backward	Km/h	24	
Battery Power System	Battery Type	Lithium iron phosphate	
	Ambient Temperature	°C	-35~+60
	Thermal Management Model	Heating film heating, water cooling	
	Rated Energy Capacity	kwh	282
	Rated Capacity	Ah	228
	Charging Time	Fastcharging : 2.0-2.5h Slowcharging : 8-10h (Based on charger)	
	Charging Method	Single gun independent charging / Dual guns charging together	
Drive System	Travel Motor Type	Permanent magnet synchronizaion	
	Rated Power	kW	120
	Rated Voltage	V	380V
	Transmission Type	Hydraulic shift	
	Transmission Gear	2 Forward 1 Reverse	
	Main Drive	Sprial bevel gear one stage reduction	
	Hub Reductor type	Spur gear panet drive	
Tire	23.5-25-16PR		
Braking System	Hydraulic caliper disc brake	Hydraulic caliper disc brake	
	Flexible shaft control drum brake	Hydraulic caliper disc brake	
Steering Hydraulic System	Type	Full hydraulic on-load sensing steering system	
	output volume(Steering Pump)	ml/r	80
	Service Pressure	Mpa	15
	Steering Angle	±35	
Service Hydraulic System	Hydraulic Pump Motor	Permanent magnet synchronization	
	Permanent magnet synchronization	Permanent magnet synchronization	
	Rated Power	kW	90
	Rated Voltage	V	380V
	Output volume(Variable piston pump+Internal gear pump)	100+80ml/r	
Working pressure	Mpa	18	
Electric System	Battery Voltage (24)	V	24
	Battery Capacity	Ah	60
	Lighting Voltage	V	24

Note: Due to technological improvements, the above data are subject to change without prior notice.



# NEW ENERGY

SAVE WORLD

[www.new-energyap.com](http://www.new-energyap.com)

